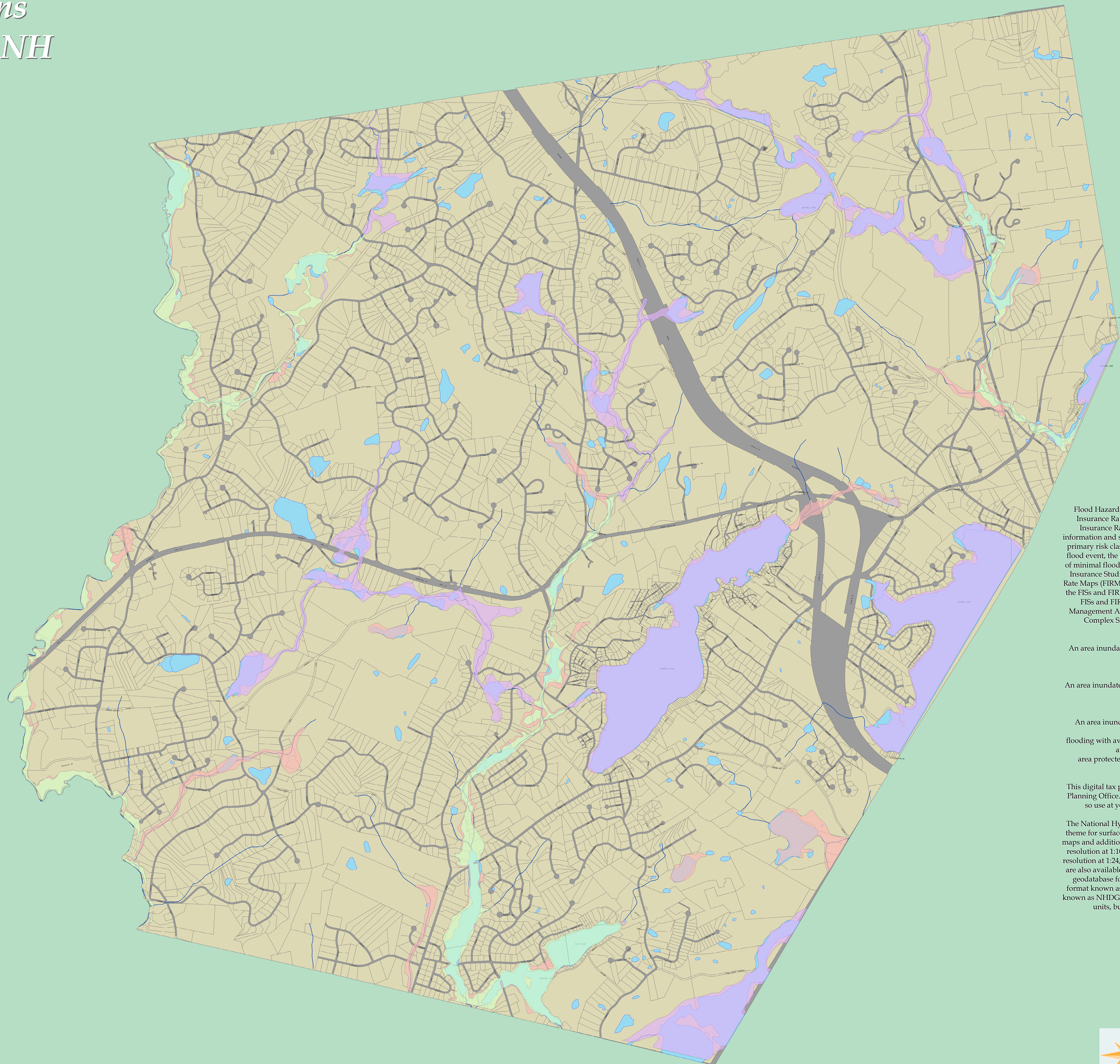


Flood Plains

Windham, NH

Floodplain Types

-  A
-  AE
-  X500
-  Waterbody
-  River / Streams
-  2009 Parcels



Flood Hazard Zones on this map are from the Digital Flood Insurance Rate Map (DFIRM) Database. The Digital Flood Insurance Rate Map (DFIRM) Database depicts flood risk information and supporting data used to develop the risk data. The primary risk classifications used are the 1-percent-annual-chance flood event, the 0.2-percent-annual-chance flood event, and areas of minimal flood risk. The DFIRM Database is derived from Flood Insurance Studies (FISs), previously published Flood Insurance Rate Maps (FIRMs), flood hazard analyses performed in support of the FISs and FIRMs, and new mapping data, where available. The FISs and FIRMs are published by the Federal Emergency Management Agency (FEMA). This was provided by GRANIT, Complex Systems Research Center, UNH in May 2005.

Zone A
An area inundated by 1% annual chance flooding, for which no BFEs have been determined.

Zone AE
An area inundated by 1% annual chance flooding, for which BFEs have been determined.

Zone X (0.2% Annual Chance)
An area inundated by 0.2% annual chance flooding; an area inundated by 1% annual chance flooding with average depths of less than 1 foot or with drainage areas less than 1 square mile; or an area protected by levees from 1% annual chance flooding.

Windham Digital Tax Parcels
This digital tax parcel data is supplied by the Town of Windham Planning Office. There are no claims to the accuracy of the data, so use at your own risk. This data is updated yearly.

The National Hydrography Dataset (NHD) is a vector geospatial theme for surface water hydrography obtained from topographic maps and additional sources. It is available Nationwide as medium resolution at 1:100,000-scale, and in much of the Country as high resolution at 1:24,000-scale or better. A few "local resolution" areas are also available at varying scales. The NHD is available in ESRI geodatabase format known as NHDinGEO, in ESRI coverage format known as NHDGEOinARC, and in ESRI shapefile format known as NHDGEOinShape. The NHD is organized by hydrologic units, but can be downloaded in various extents.

