



MOVING AHEAD

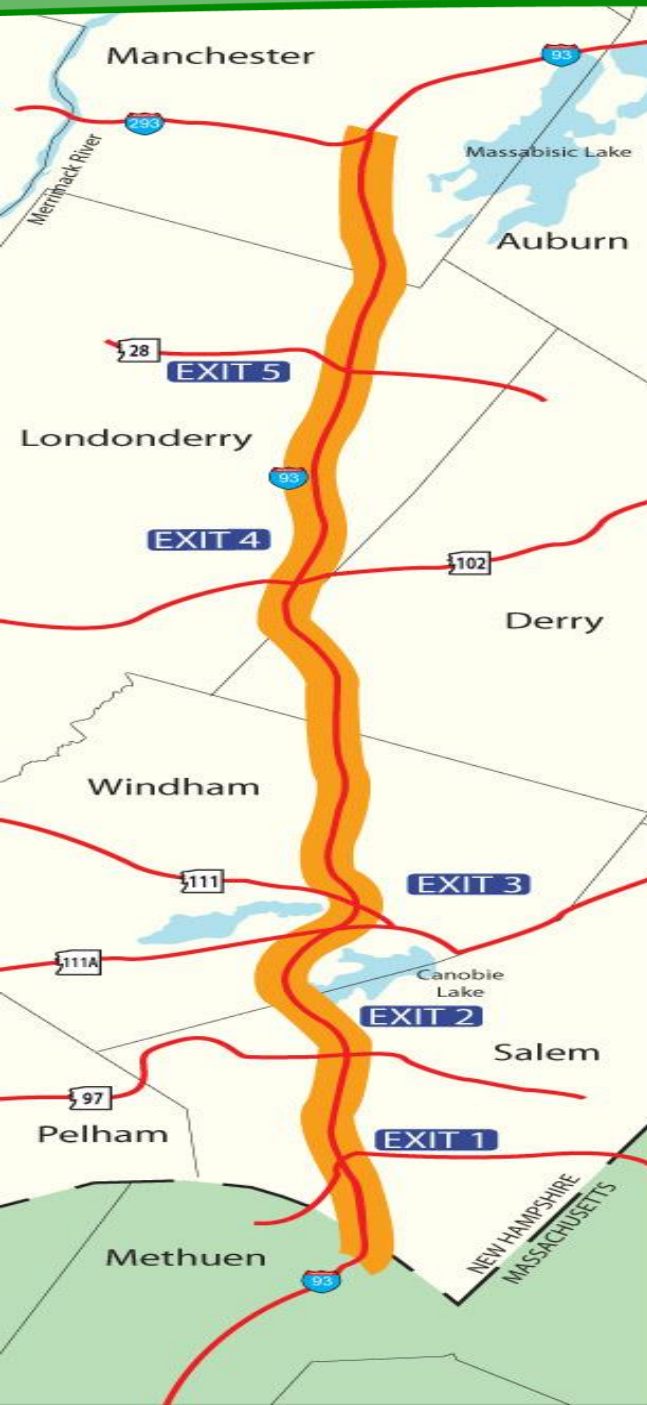
Windham Community Development

June 22, 2016

Agenda

- Scope of Work
- Project Implementation
- Construction Updates
- Capacity Improvement Projects

Scope of Work



- Widen/reconstruct 20 miles of Interstate 93 from the Massachusetts State Line to the I-293 split in Manchester
- Reconstruct/Modernize Exits 1-5
- Work on 45 bridges (23 new)
 - 19 “red list” bridges
- Construct 3 new park & ride lots at Exits 2, 3, & 5 and expand bus service
- Construct 5 miles of sound walls at 12 locations along the corridor

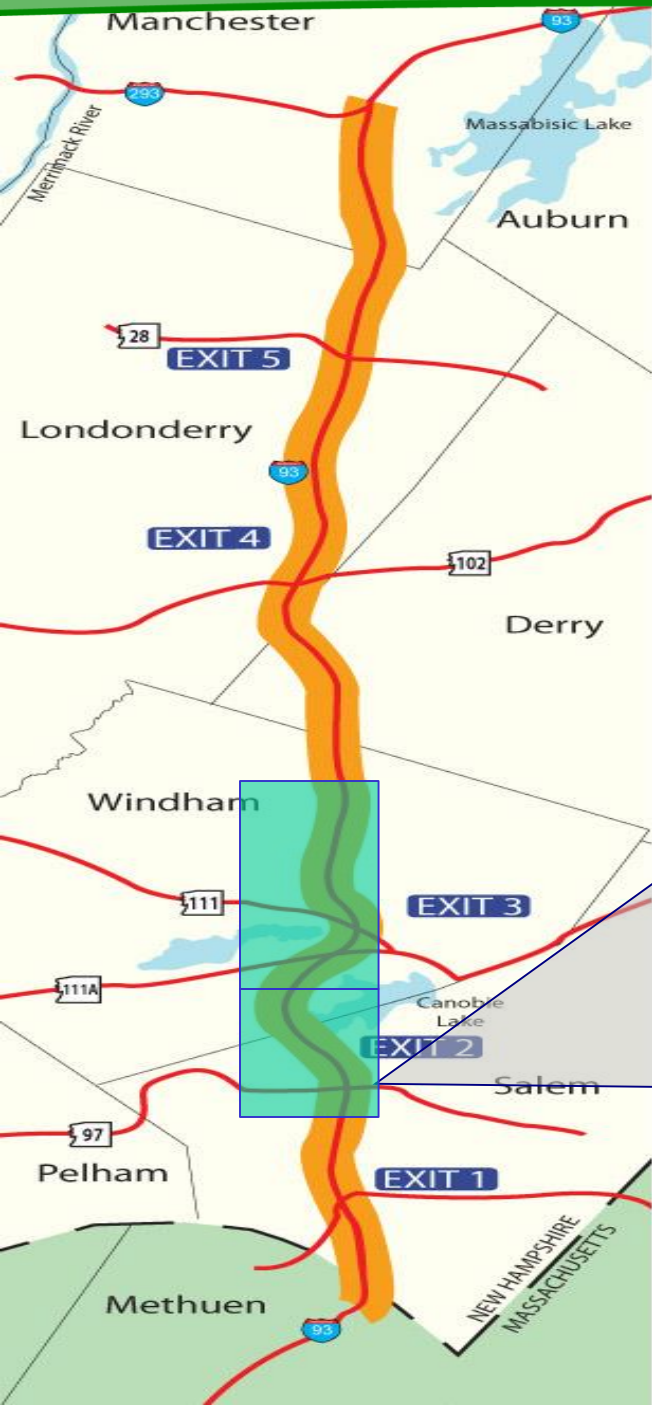
Project Implementation

- **Early Action Projects (complete)**
 - Standalone projects with independent utility from the mainline – include park and ride facilities, overpass bridges, bus service and ITS devices
- **Mainline Priorities (active)**
 - Projects improve safety, capacity and infrastructure conditions of sections of the corridor that are in the most need of attention
 - Will address principal bottlenecks
- **Capacity Improvements (next phase)**
 - Remaining projects to improve capacity and infrastructure condition along corridor

Early Action and Mainline Priorities



- Construction began in 2006
- Projects include work at Exits 1-3 & 5
- 3 lanes in each direction from Exit 3 south opened in August 2015
- \$350 M estimated cost for 19 construction contracts
- All Early Action projects are complete
- Mainline Priorities are nearing completion



Construction Exit 2 & Exit 3

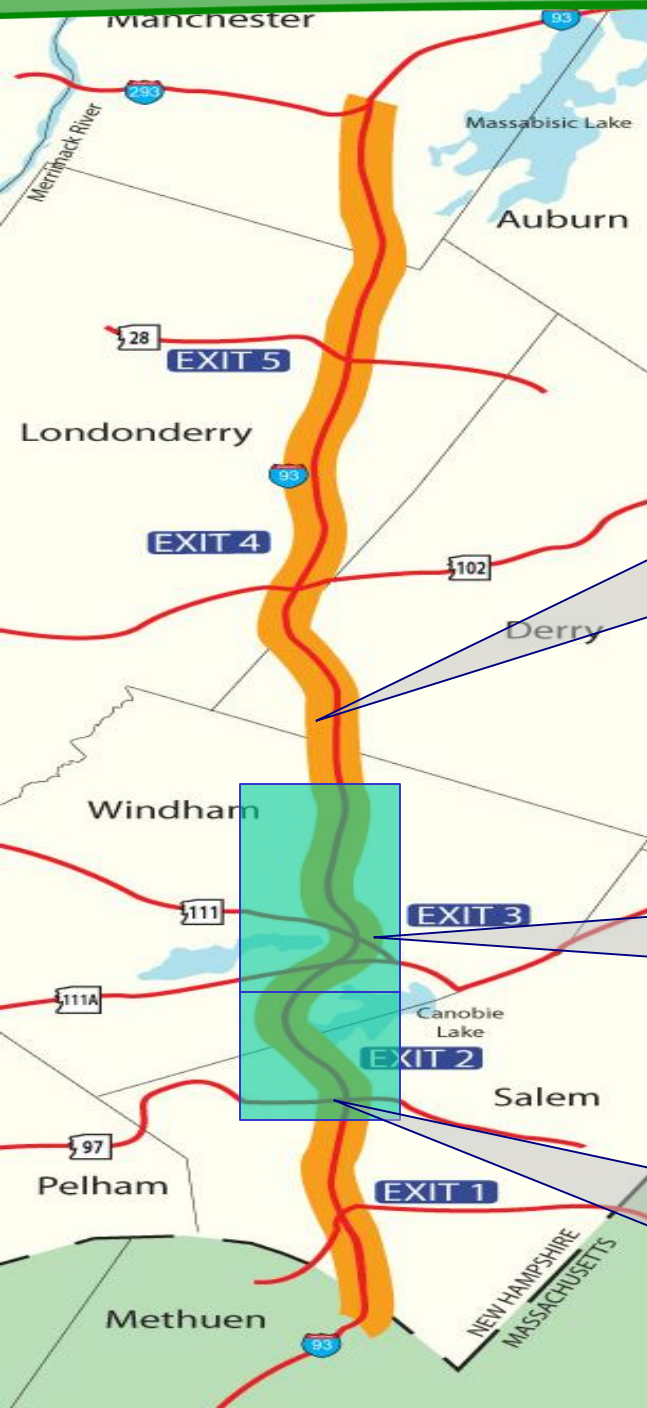
- 6 construction projects - \$195 M
- Reconstruct 5 miles mainline & 2 Exits
 - 2.2 M cy embankment
 - 1.5 M cy rock excavation
 - 1.6 M cy common excavation
 - 375,000 cy crushed selects
- Construction began 2008
- 4 projects complete - \$125 M
- 2 projects active - \$70 M
 - 90% complete
- 2016 completion

Construction Exit 2 & Exit 3

Exit 3 SB & NH 111 (West), 13933I - \$35 M
R. S. Audley – to be complete 2016

Exit 3 & NH 111A (East), 13933H - \$35 M
Weaver Bros. – to be complete 2016

Exit 2 & Pelham Rd, 13933E - \$44 M
George Cairns –
complete March 2016



Exit 3 –13933I

- Reconstructs 3 miles of SB I-93
 - Reconstructs SB on-ramp
- Relocates 1 ¼ miles of NH 111
 - Shifts 500' to the north, further away from Cobbetts Pond
- Former NH Route 111 (Enterprise Drive) ends in a cul-de-sac at Castleton
- Most of work is on a new alignment or on the old SB mainline – both of which are out of traffic
- \$35 M – To be complete in 2016



13933I – August 2015



New NH Route 111 Facing West
(next to the new Exit 3 SB ramps)

139331 – Winter 2015/2016

I-93 SB



Exit 3, NH Route 111 Facing East,
SB Ramp Area

139331 – Winter 2015/2016

I-93 NB



Exit 3, NH Route 111 Facing West,
NB Ramp Area

139331 – Winter 2015/2016



I-93 SB/
Exit 3

Enterprise Drive (former NH Route 111)
Facing East

New Route 111 in Windham

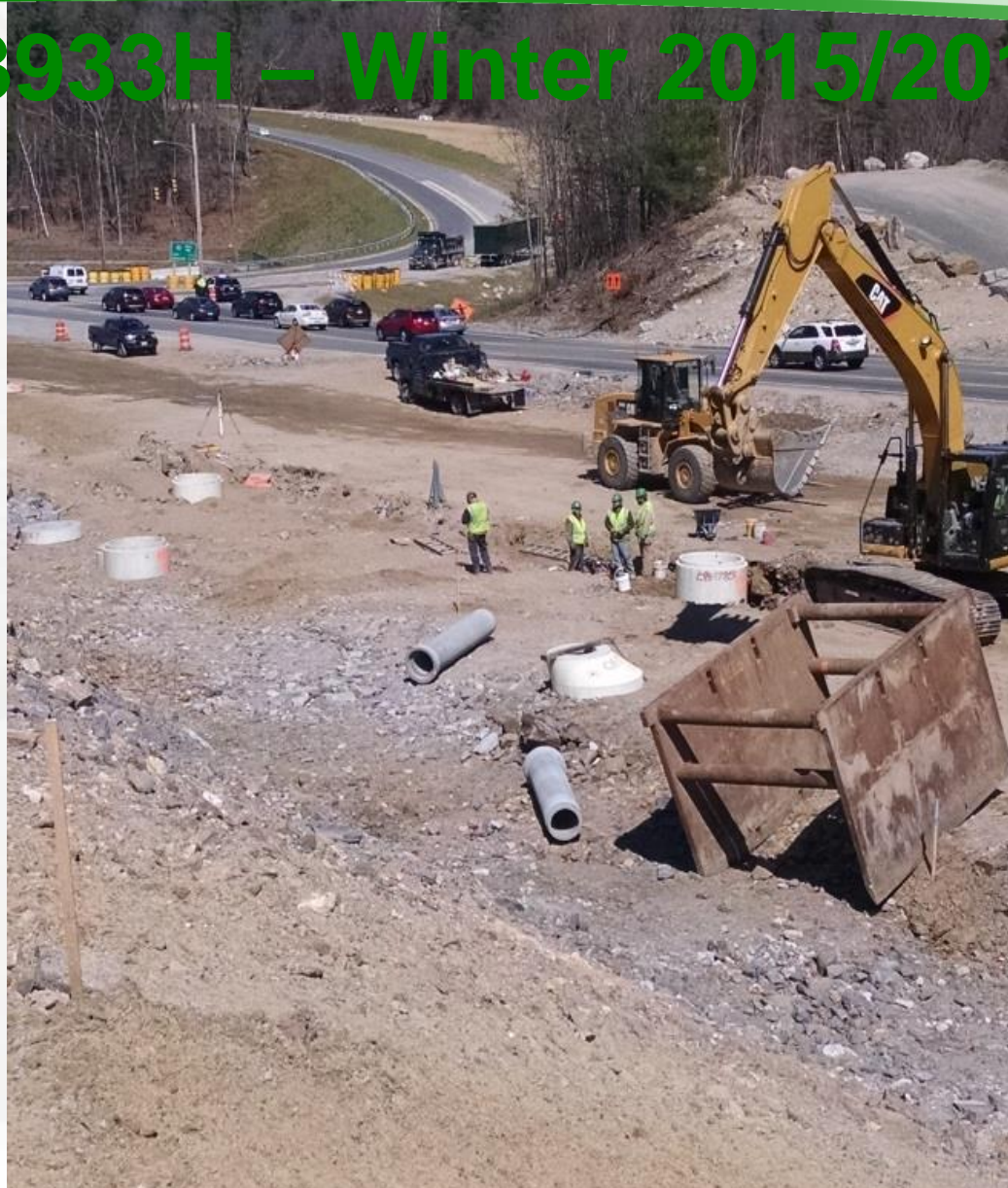


I-93 SB Exit 3 Off Ramp

Exit 3 – 13933H

- Finalizes the work at Exit 3
- Reconstructs 2 miles of NB I-93 lanes from north of NH 111A to the weigh station
- Ties new NB lanes into existing lanes at the north and south end
- Reconstructs Exit 3 NB On and Off ramps
- Relocates ½ mile of NH 111A to the west – aligns with previous NB off-ramp
- \$35 M – To be Complete in 2016

13933H – Winter 2015/2016



Exit 3 NB Ramps & NH Route 111,
Facing North

13933H – Winter 2015/2016



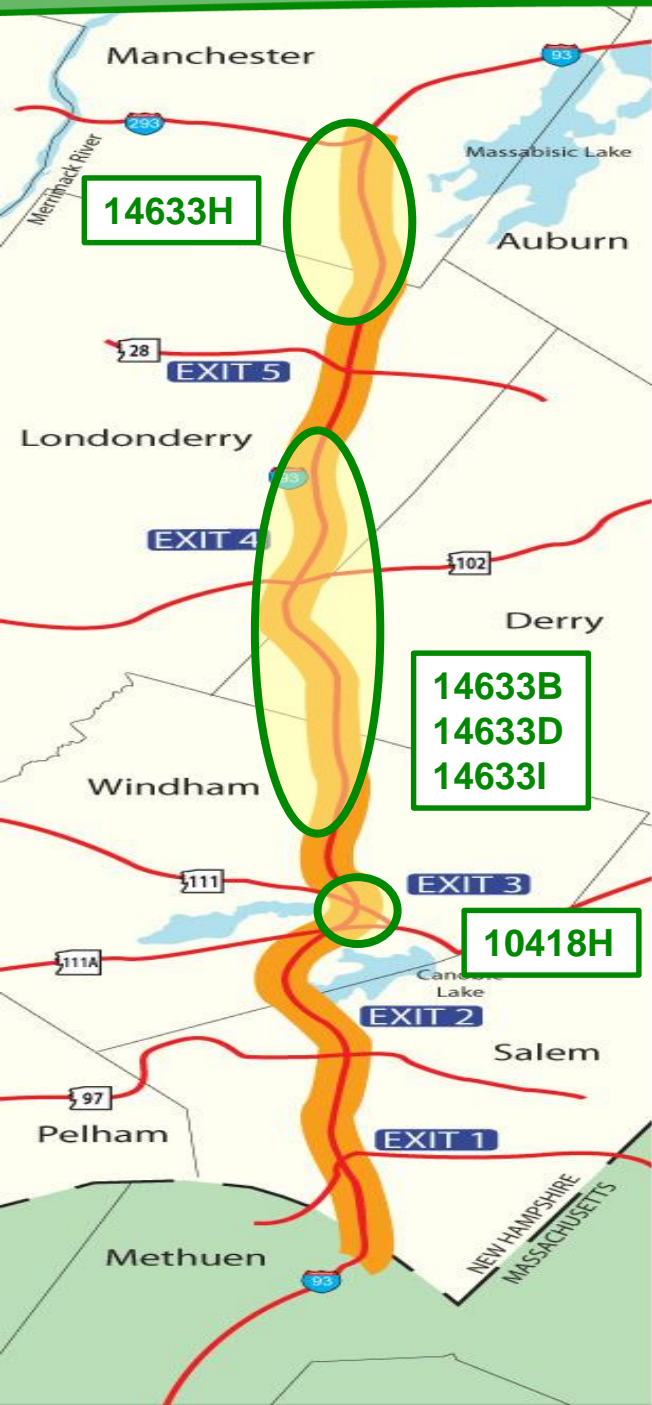
I-93

NH Route 111 Facing West,
Exit 3 Area at the NB Ramps Intersection

13933H – June 2016



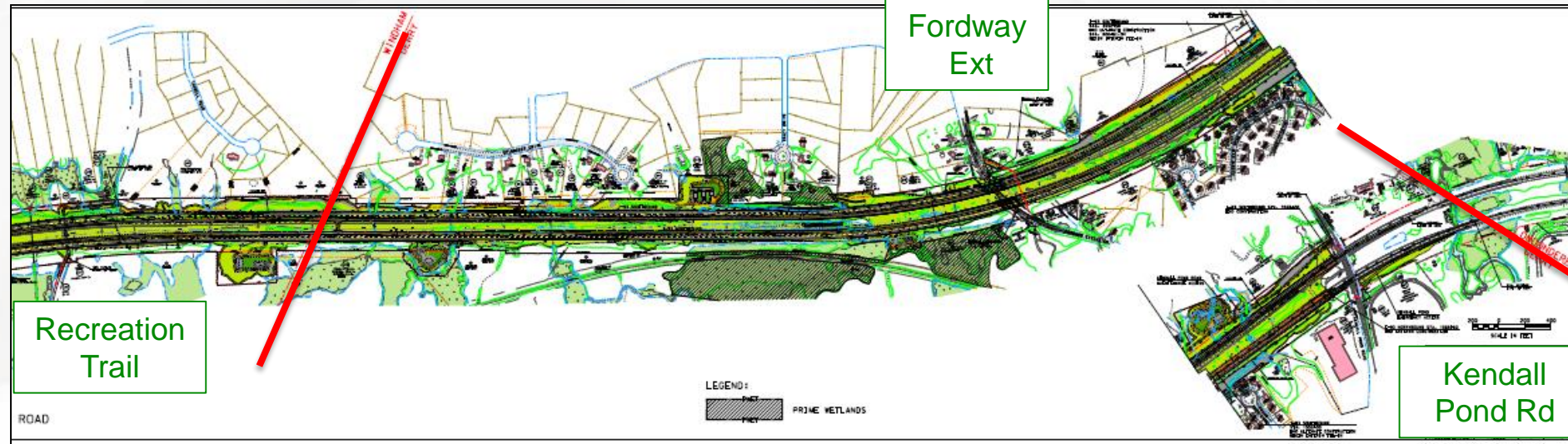
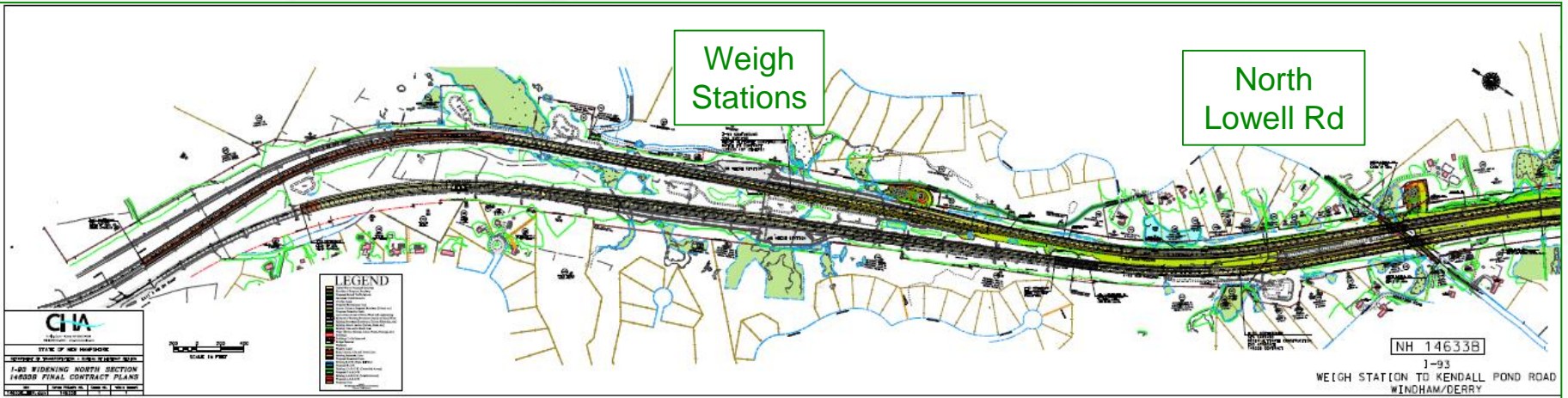
NH Route 111 Facing East,
Exit 3 Area at the NB Ramps Intersection



Capacity Improvements

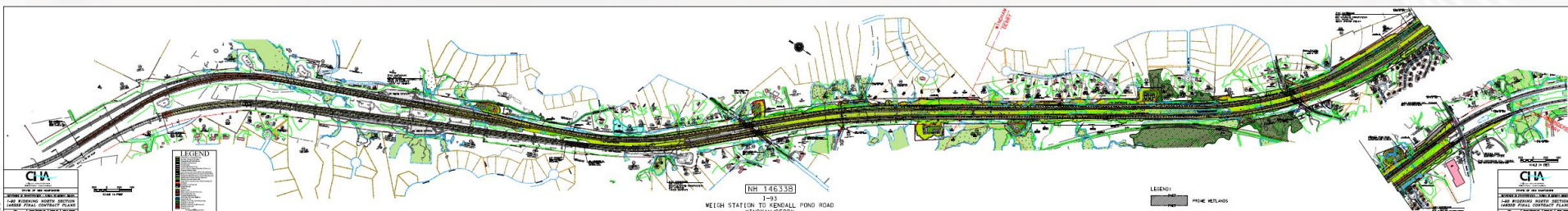
- 4 construction contracts \$200 M
- Funded with revenue from SB 367 - 4 cent gas tax
- Construction started in 2016
- Complete by 2020
- (Park & Ride Facility at Exit 3)

Active Capacity Improvements Exit 3 to 4 – 14633B



Exit 3 to 4 – 14633B

- R.S. Audley began construction in Spring of 2016
- Reconstruct 3 miles of I-93
 - 3 lanes in each direction
- Widen the I-93 bridges over:
 - North Lowell Road
 - Fordway Extension
- Recreation Trail under I-93
- \$55 M – To be complete in 2019



Greenway Trail Culvert – 14633B



Greenway Trail – 14633B

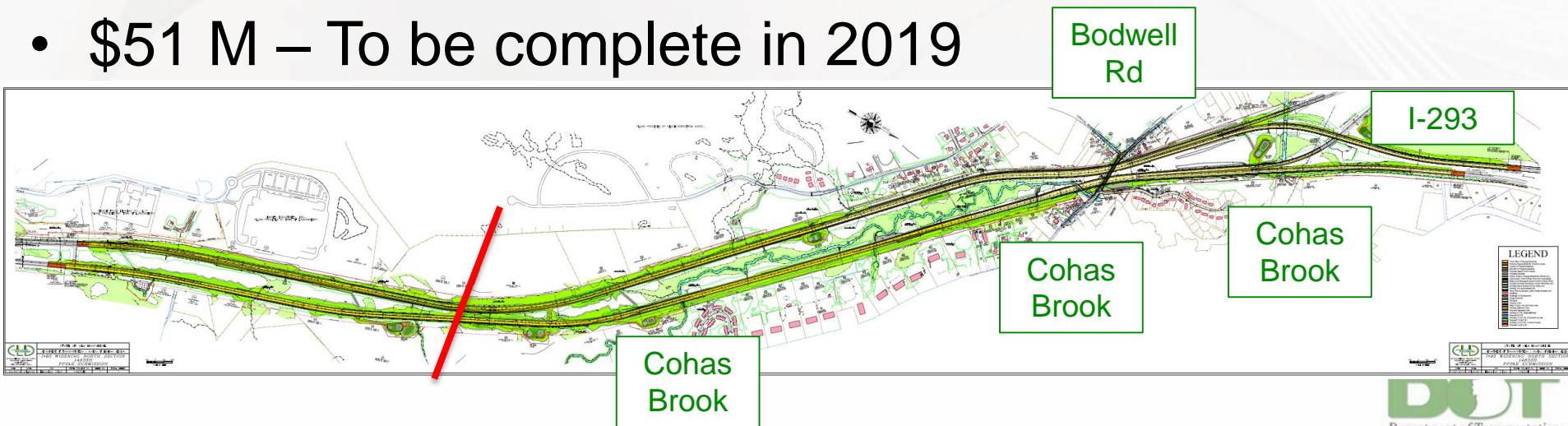


Facing West, towards I-93 NB

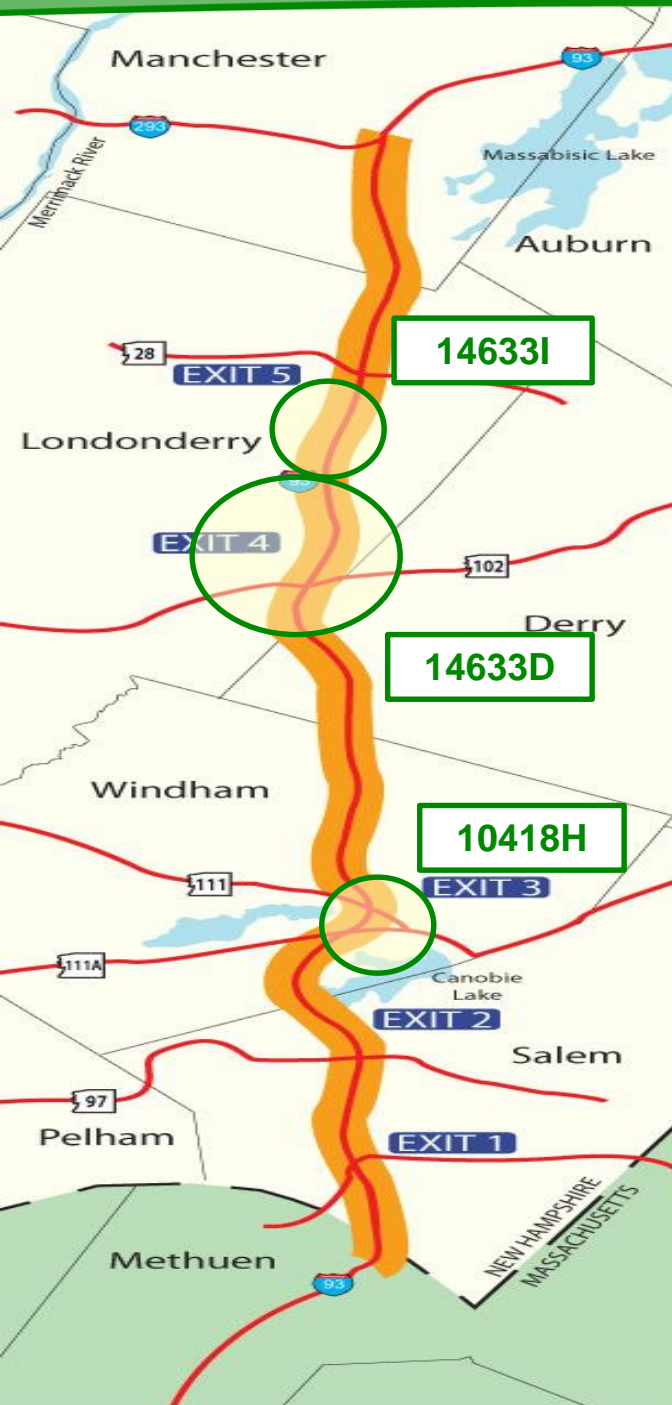
Active Capacity Improvements

Exit 5 to the I-293 split – 14633H

- A.J. Coleman awarded the contract on 05/04/16
- Reconstruct 3.2 miles of I-93
 - 4 lanes in each direction
- Widen I-93 bridges over
 - Cohas Brook
 - Bodwell Road
- \$51 M – To be complete in 2019



Anticipated Projects for 2016



- 14633I
– Exit 4 to 5 Area
- 14633D
– Exit 4 Area
- 10418H
– Exit 3 Park and Ride

Exit 3 Park & Ride 10418H

NH 111

SALEM 10418H

EXIT 3 PARK AND RIDE
FACILITY (PHASE 1)

LEGEND

- Travel Way of Proposed Roadway
- Shoulder of Proposed Roadway
- Proposed Raised Traffic Islands
- Proposed Sidewalk
- Access Points to Proposed Roadway (Drives, etc.)
- Approximate Limit of Slope Work and Landscaping
- Removal of Existing Pavement Outside of Slope Work
- Existing Pavement (Roadways, Drives, Sidewalks, etc.)
- Existing Gravel Surfaces (Drives, Paths, etc.)
- Existing Tree and/or Brush Lines
- Water (Rivers, Streams, Lakes, Ponds, Swamps, etc.)
- Buildings
- Buildings To Be Removed
- Bridge Removal
- Wetlands
- Property Lines
- State, County, City and Town Lines
- Existing Easement Lines
- Proposed Easement Lines
- Existing R.O.W. (Right-of-Way)
- Proposed R.O.W.
- Existing C.A.R.O.W. (Controlled Access)
- Proposed C.A.R.O.W.
- Existing L.A.R.O.W. (Limited Access)
- Proposed L.A.R.O.W.



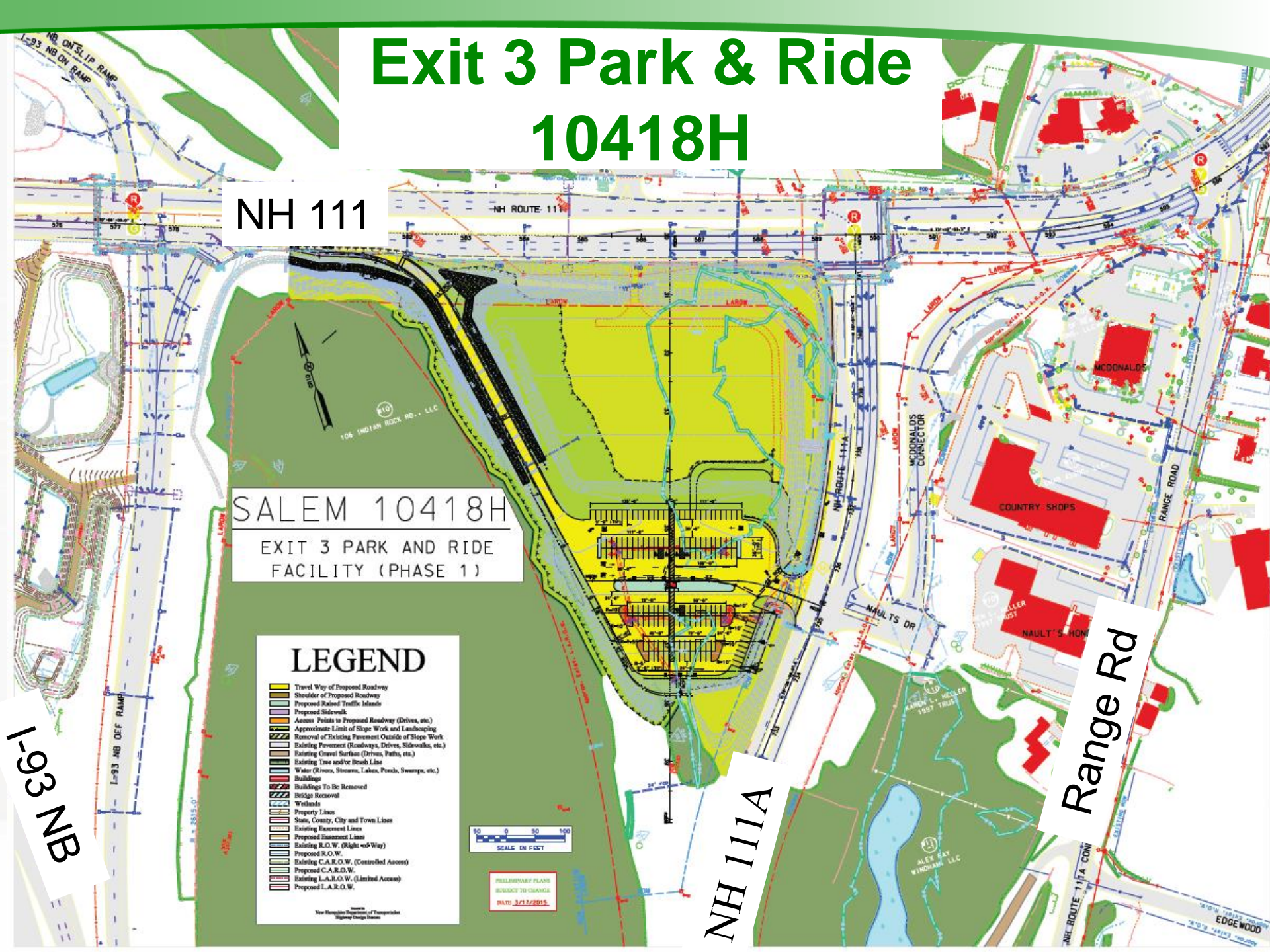
PRELIMINARY PLANS
SUBJECT TO CHANGE
DATE: 3/17/2015

New Hampshire Department of Transportation
Regional Design Division

I-93 NB

NH 111A

Range Rd



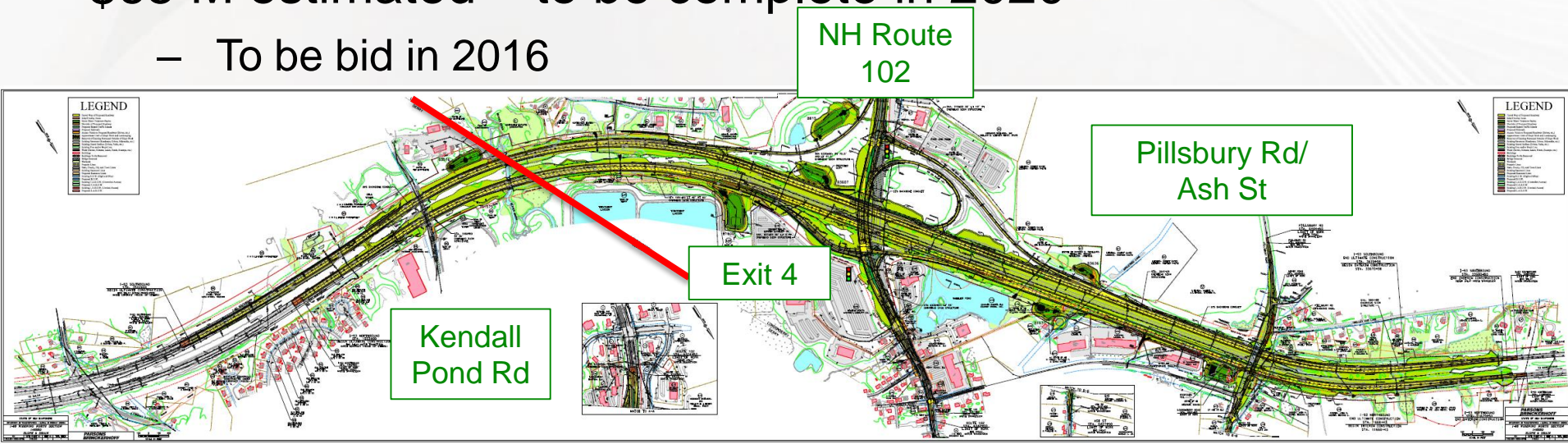
Exit 3 Park & Ride

10418H

- Construct a 130 space Park & Ride
- Located between the Exit 3 NB off ramp, NH Route 111 and NH Route 111A
- Access from NH Route 111 EB or NH Route 111A
- Accommodates future expansion
- Accommodates future bus use
- \$2.5 M estimated – to be complete in 2017
 - To be bid in 2016

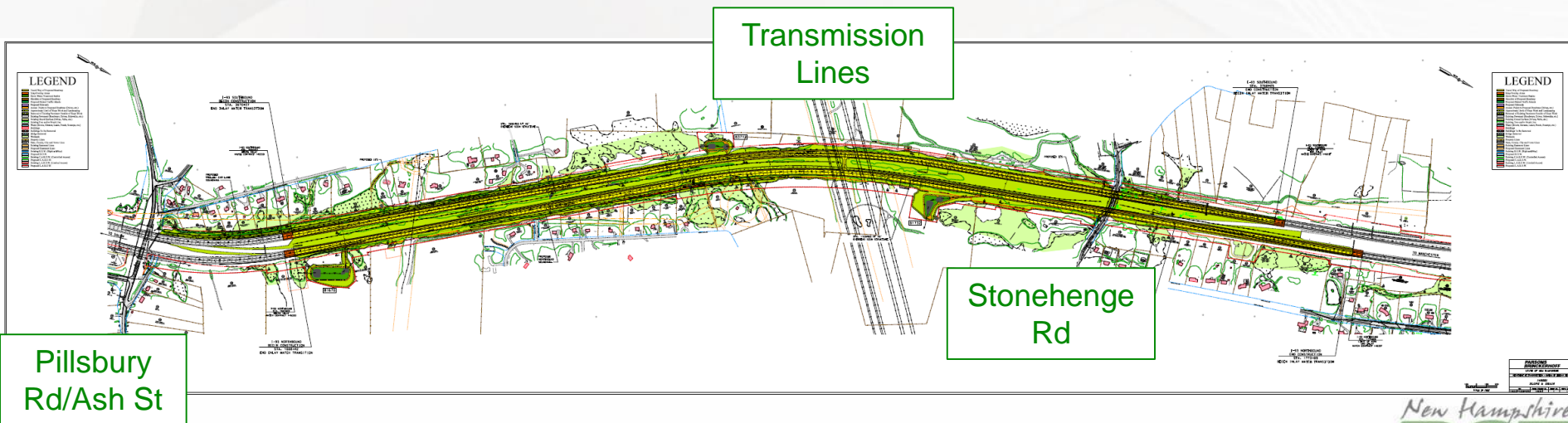
Exit 4 Area – 14633D

- Reconstruct 2 miles of I-93
 - Exit 4 Reconstruction
 - Widen I-93 to 3 lanes in each direction
- Bridge work:
 - Replace Pillsbury Road/Ash Street Bridge over I-93
 - Replace NH Route 102 over I-93
 - Widen I-93 Bridge over Kendall Pond Rd
 - New Beaver Brook Bridge (replaces a box culvert)
- \$65 M estimated – to be complete in 2020
 - To be bid in 2016



Exit 4 to 5 Area – 14633I

- Reconstruct 2 miles of I-93
 - Widen I-93 to 3 lanes in each direction
- Widen I-93 Bridges over Stonehenge Road
- \$33 M estimated – to be complete in 2020
 - To be bid in 2016



Thank you!

Visit

www.RebuildingI93.com

for more information on the project